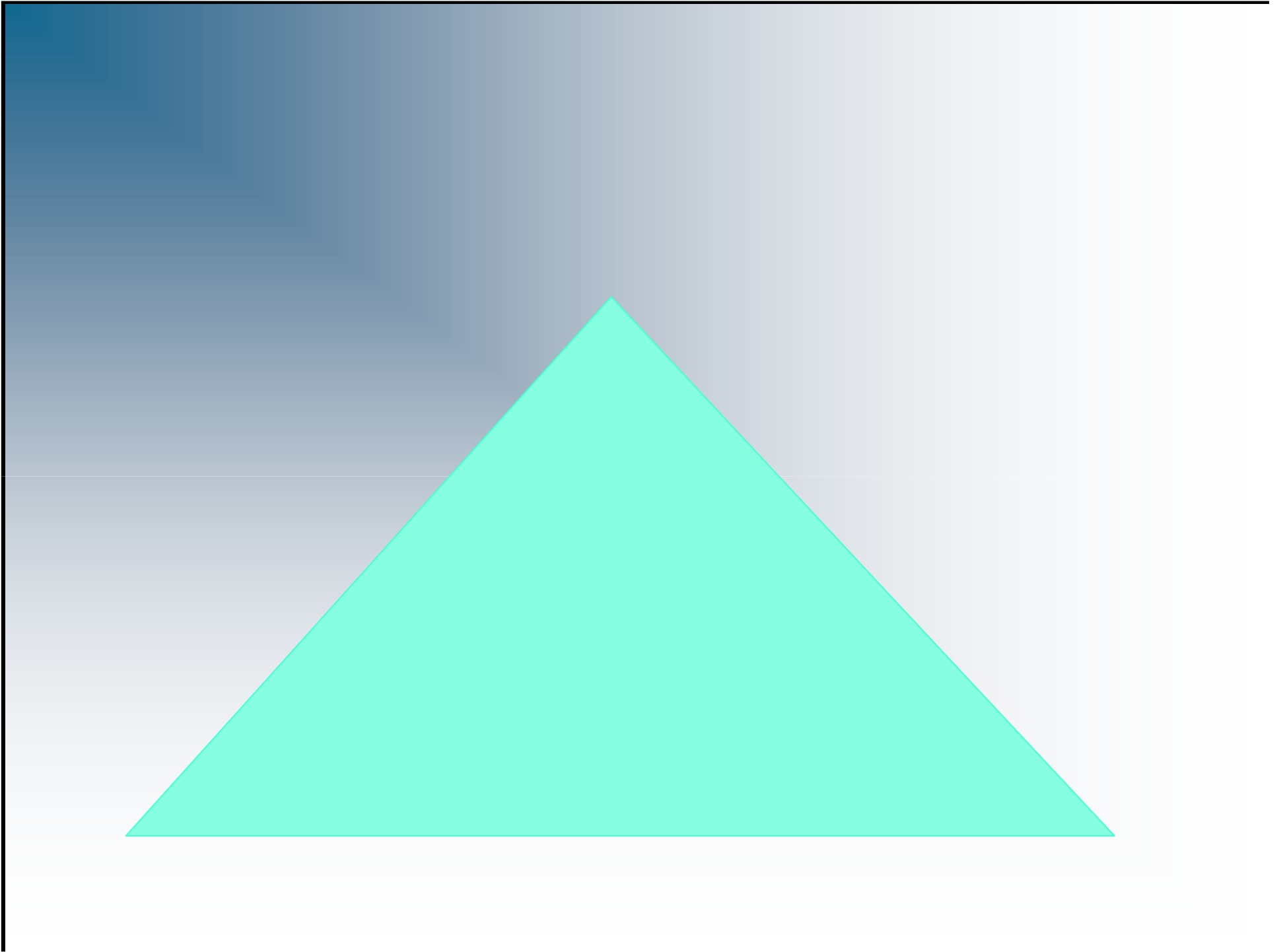


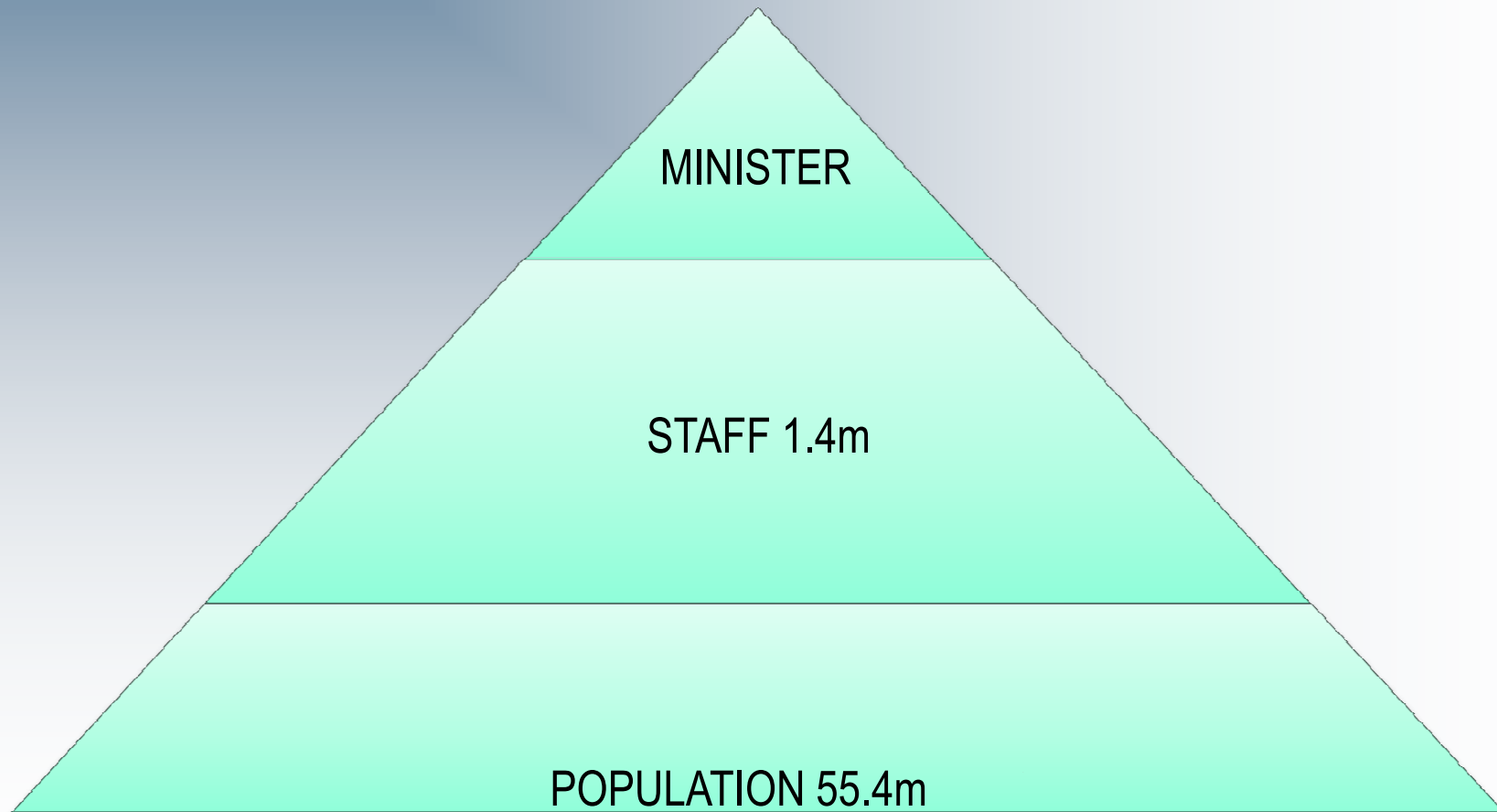
# International Federation of Health Plans

The leading global network of the health insurance industry





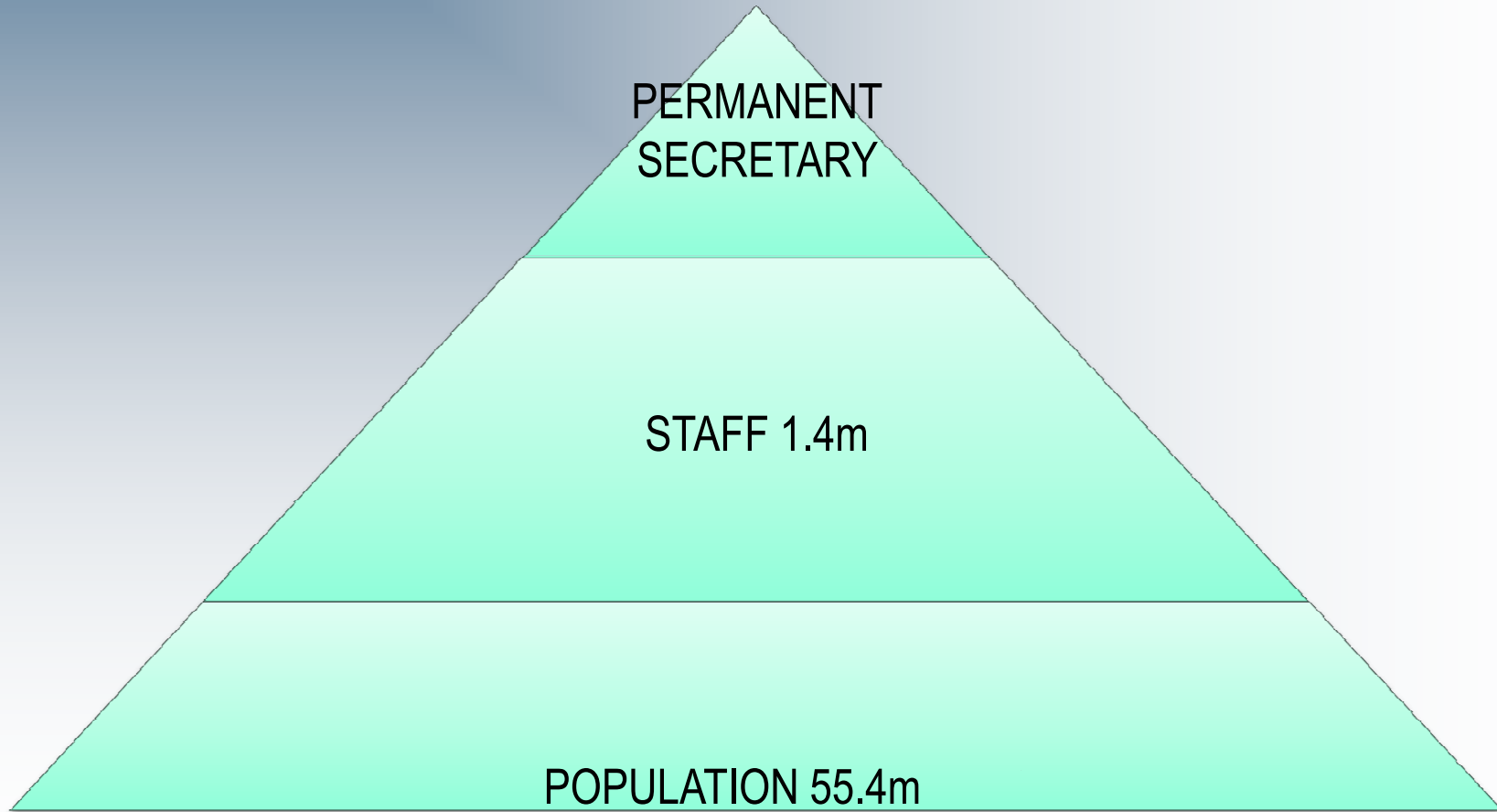
# NHS (England)



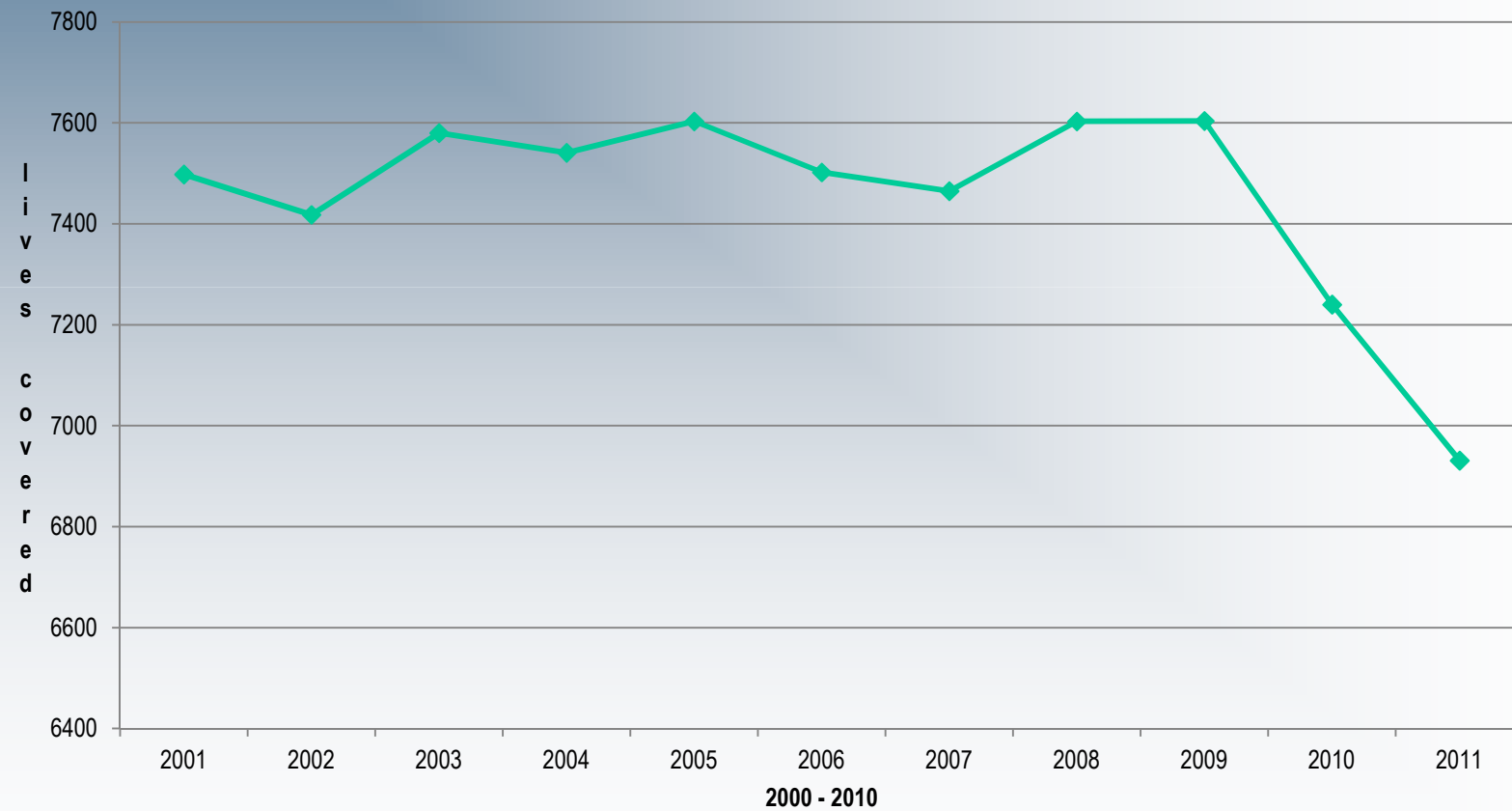




# NHS (England)

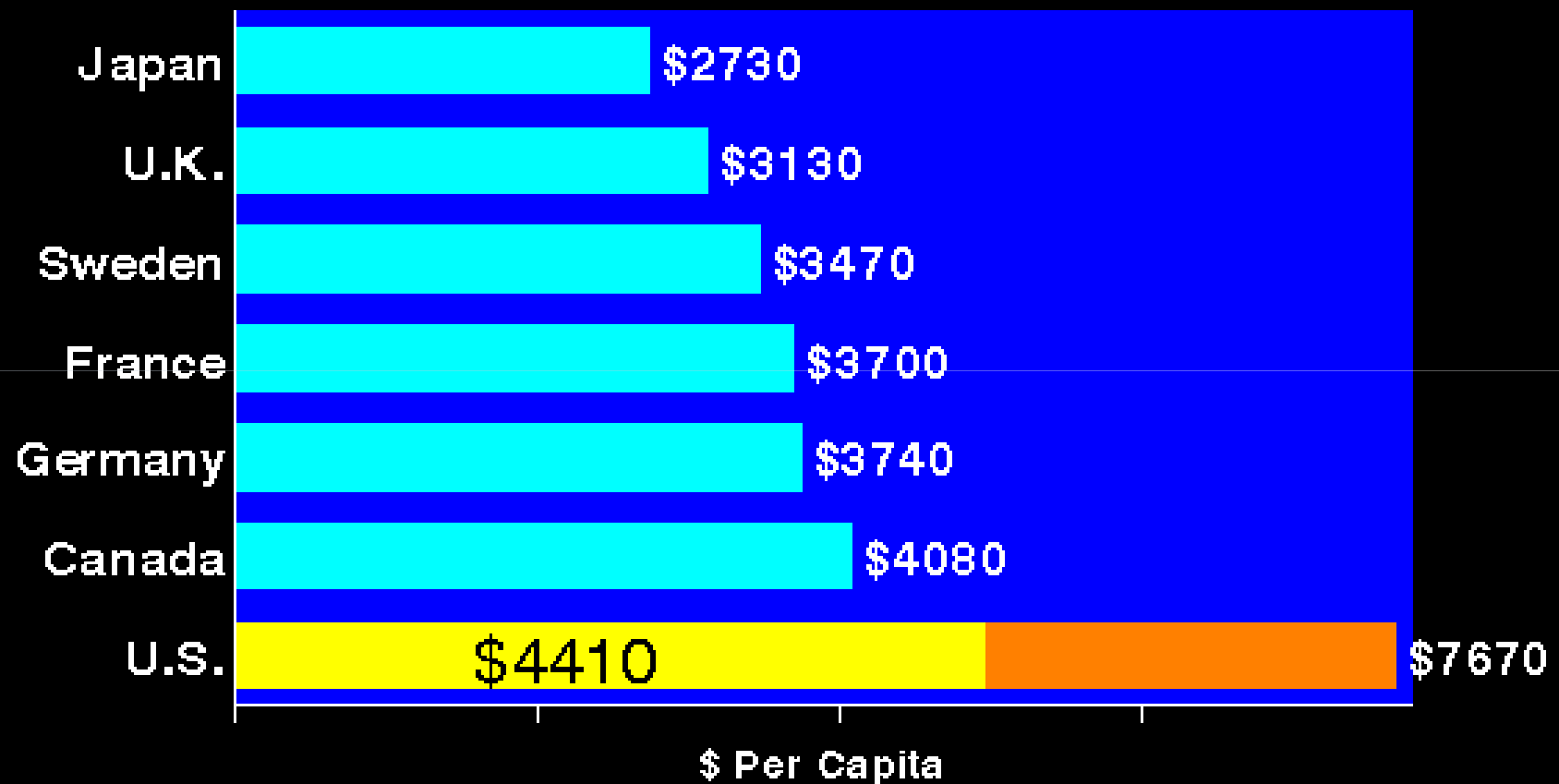


# UK PMI Market 2000 -2010



Source: Laing and Buisson  
2011

# U.S. PUBLIC Spending Per Capita for Health is Greater than TOTAL Spending in Other Nations



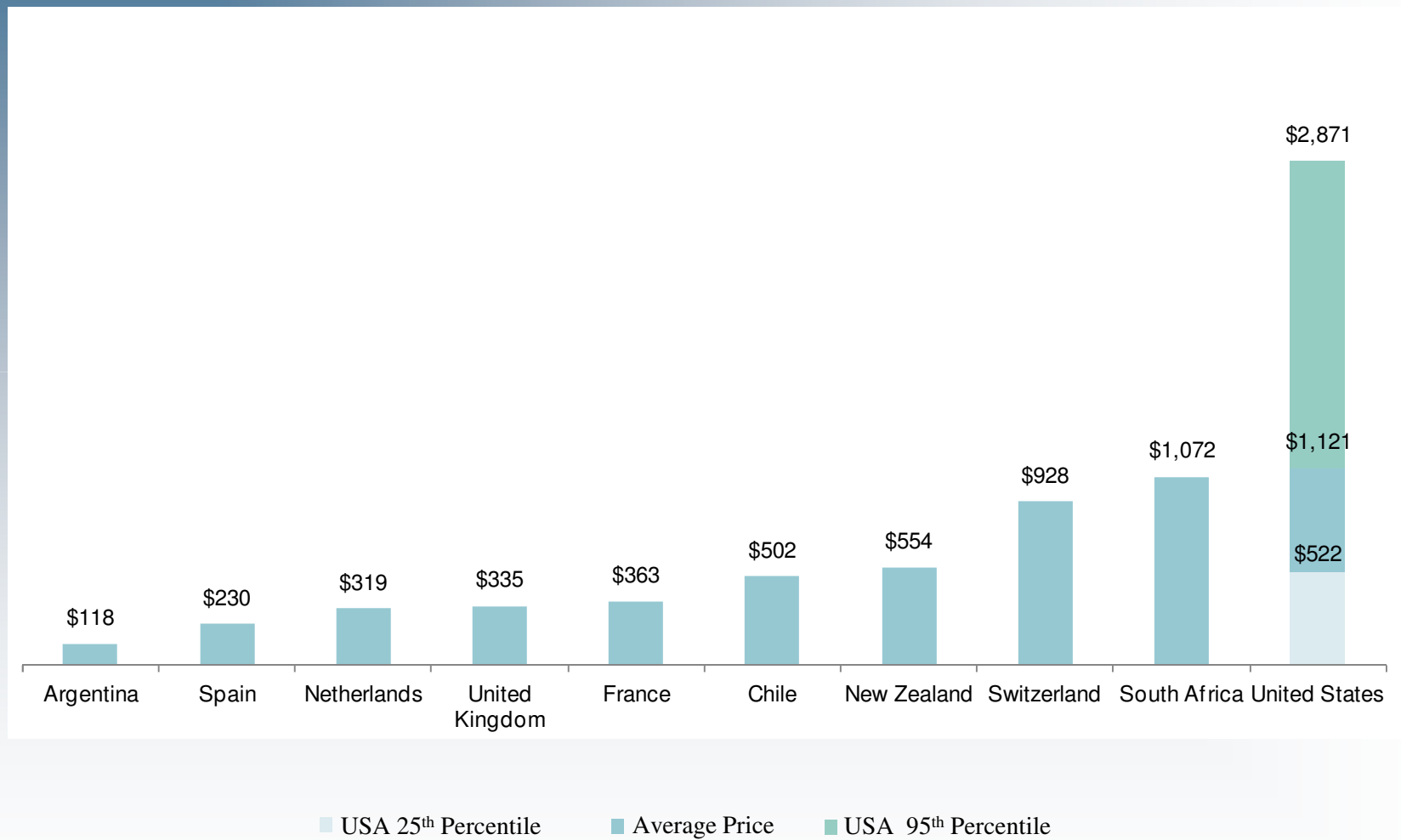
■ Total Spending ■ U.S. Public ■ U.S. Private

Note: Public includes benefit costs for govt. employees & tax subsidy for private insurance

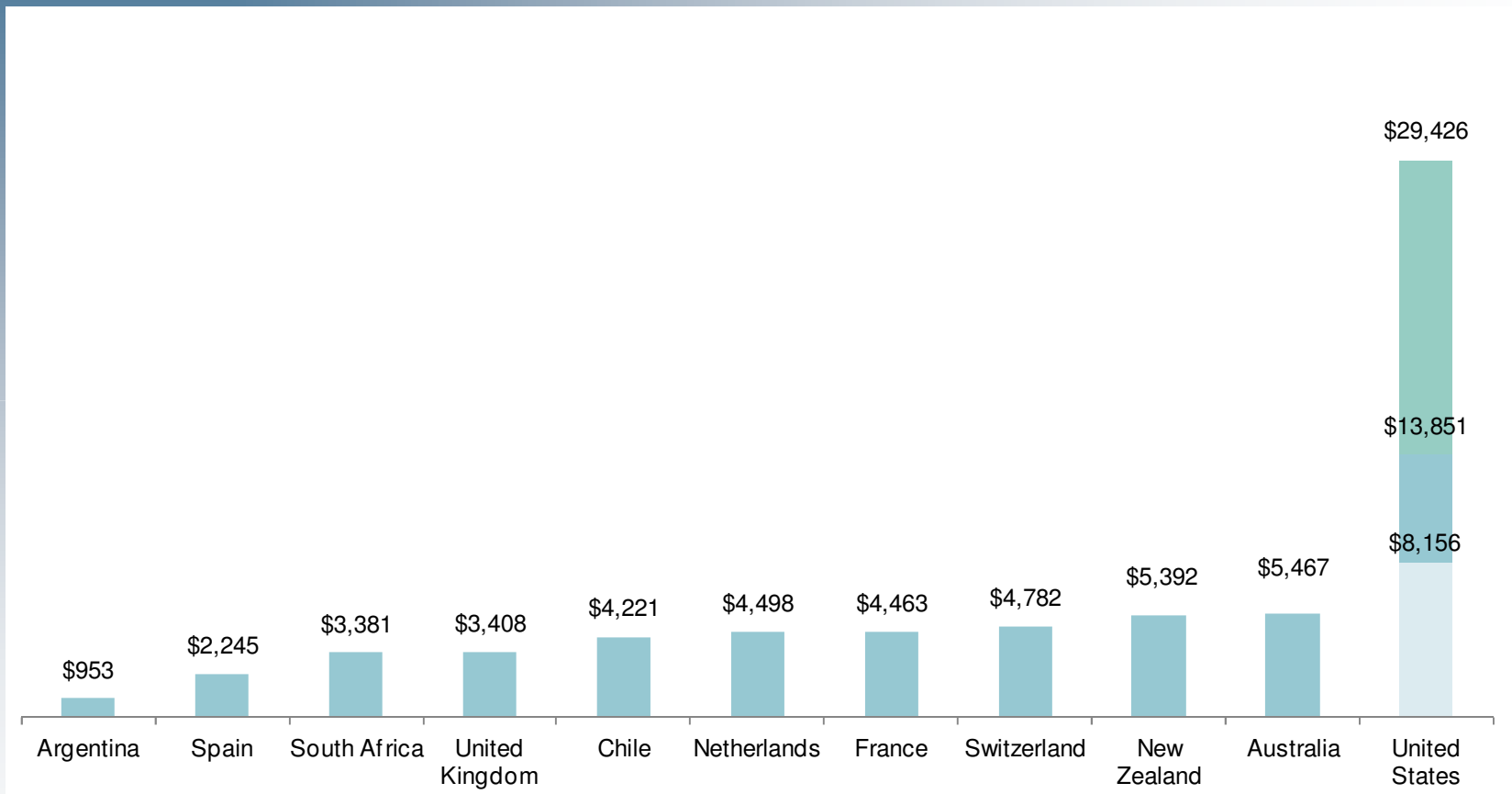
Source: OECD 2010; Health Aff 2002; 21(4):88 - Data are for 2008



## 2012 Scanning and Imaging: MRI



# 2012 Total Hospital and Physician Cost: Appendectomy



■ USA 25<sup>th</sup> Percentile    
 ■ Average Price    
 ■ USA 95<sup>th</sup> Percentile

(\$ USD)

# Percentage of Population Covered by Private Hospital Insurance

December 1976 to December 2011

